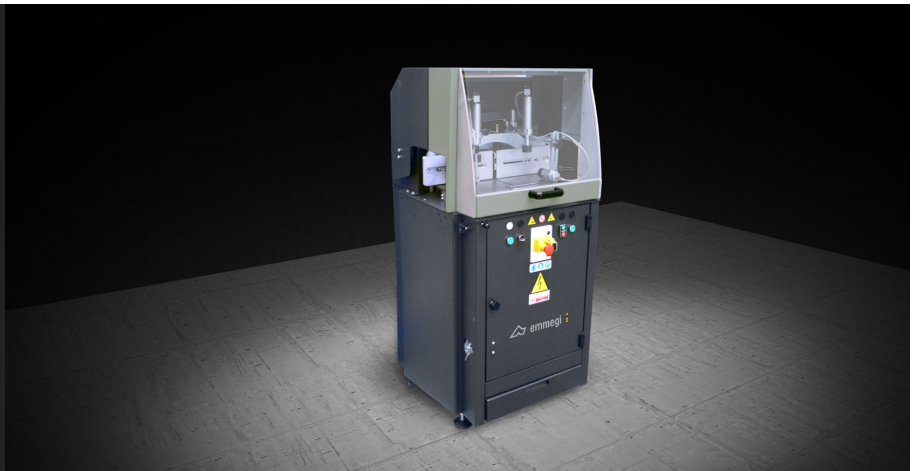


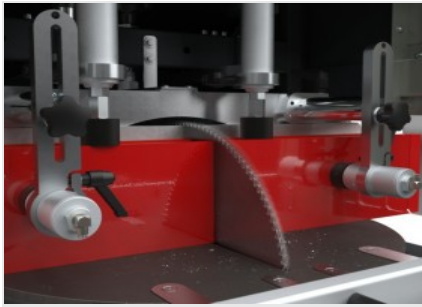


## *SCA Mini P 400*

Single head cutting-off machines



The single head rising blade cutting-off machine, with left loading side, for cutting at angular settings from 15° to the left to 15° to the right and intermediate angles. Available with pneumatic blade feed.



**Cutting zone**

The rugged horizontal work bench associated with the vertical striker allows optimum positioning of the workpiece to be cut, thus ensuring considerable accuracy of the cut surface.



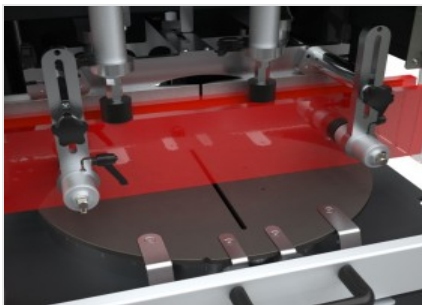
**Control**

The control console allows user-friendly and intuitive machine operation. The practical lever with scale serves for rapid angular positioning of the blade. Instead, a further adjusting system allows adjustment of the vice pressure and blade outfeed rate.



**Swarf drawer**

A practical swarf drawer allows efficient collection of the processing debris thus ensuring clean conditions of the machine and work area.



**Vices**

Thanks to the technical solutions adopted, the horizontal and vertical vices ensure the utmost rigidity in workpiece clamping as well as rapid repositioning of the vices. Such characteristic allows the use of this machine in window/door manufacture.





SCA MINI P 400 / SINGLE HEAD CUTTING-OFF MACHINES

BLADE

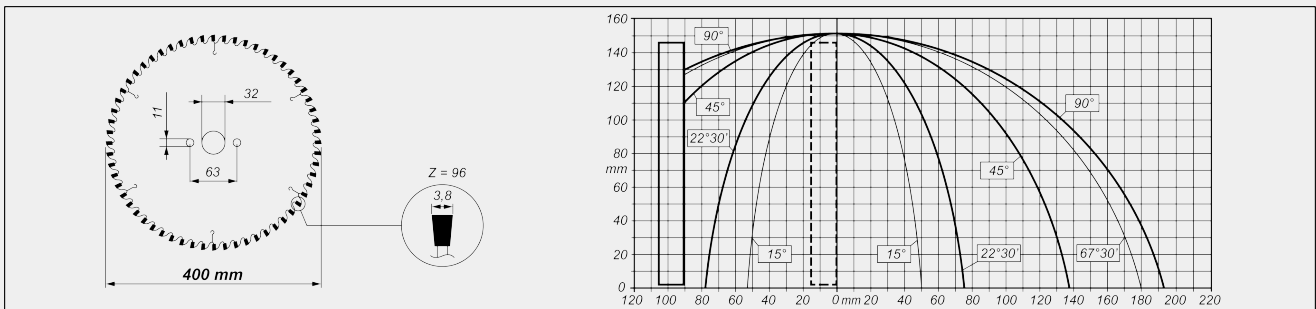
Made of Widia (mm)

Ø = 400

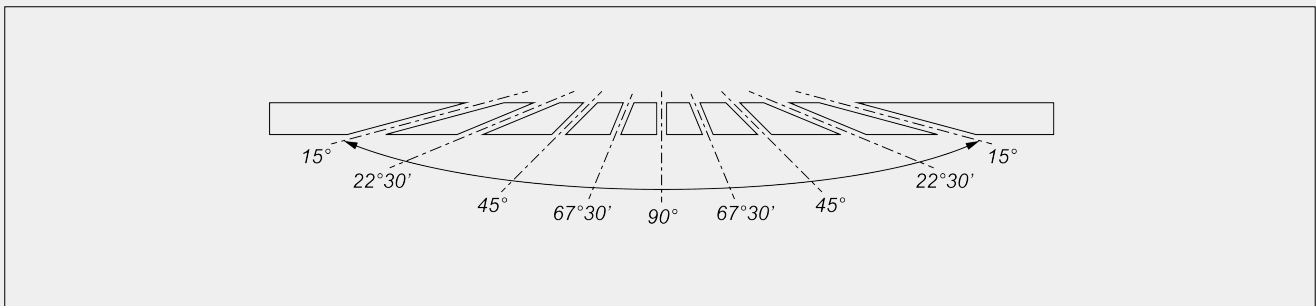
BLADE FEED

Pneumatic

CUTTING DIAGRAM



CUTTING UNIT TILTING



Mechanical adjustment of intermediate angles

CUTTING AREA PROTECTION

Full guard manually operated

LUBRICATION SYSTEM

Spray-mist lubrication with oil emulsion

Emmegi S.p.A.  
 Via Archimede, 10  
 41019 - Limidi di Soliera (MO)  
 ITALY

Tel +39 059 895411  
 Fax +39 059 566286  
 P.Iva/C.Fisc 01978870366  
 info@emmegi.com  
 www.emmegi.com

The right to make technical alterations is reserved.

**WORKPIECE LOCKING**

Pair of pneumatic vertical vices	<input checked="" type="radio"/>
Optional additional horizontal vices	2

**MOTOR**

Three-phase (without brake)	<input checked="" type="radio"/>
Power (kW)	1,5
Rpm	2.800

Included  Available