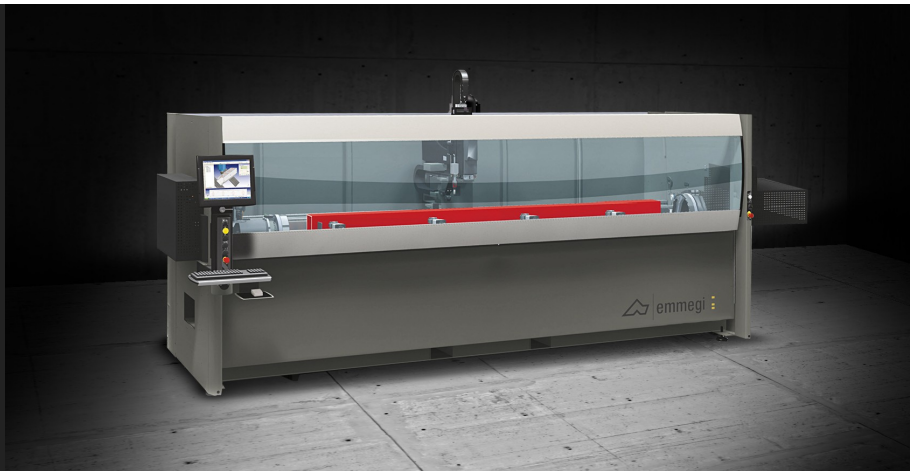


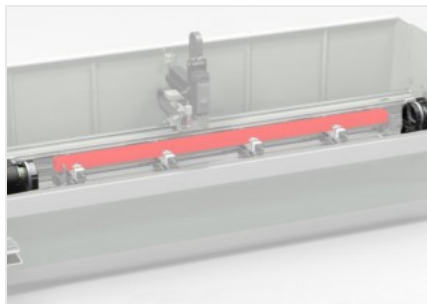


Phantomatic T3 Star

CNC machining centres



Machining centre CNC with 4 controlled axes, used for working bars of aluminium, PVC, light alloys in general and steel pieces up to 3 mm. It has a 4 tool magazine, with the possibility of hosting 2 angular units and one milling disc. The presence of the rotary work table (CN axis) allows machining at any angle from - 90° to + 90° and on the two heads with a double output angle machining head, with the table at 0°. All CNC axes are absolute and do not require resetting upon machine restart.



Tilting table

CNC-controlled tilting table capable of rotation from - 90° to + 90° including intermediate angles. This solution allows machining on steel, aluminium and PVC profiles with maximum speed and precision, without resorting to manual rotation of the workpiece or the use of angle aggregates, taking advantage of the power of the electrospindle in all working conditions.



Operator interface

The new control version with suspended interface allows the operator to look at the monitor from any position, as it can be rotated around the vertical axis. The operator interface has a 15" touch screen display with all USB connections necessary to interface with a remote PC and NC. It has a push-button panel, mouse and keyboard. It is also set up for the connection of a barcode reader and remote push-button panel. It is equipped with a front USB socket for data transfer.



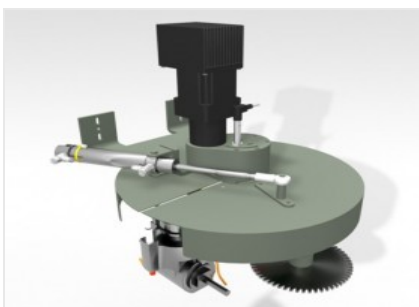
Pneumatic stops

Robust stops are present in the machine that are used for bar reference, located one on the right side and one on the left side. Each stop is activated by a pneumatic cylinder, it is of retractable type and is automatically selected by the machine software according to the machining to be performed.



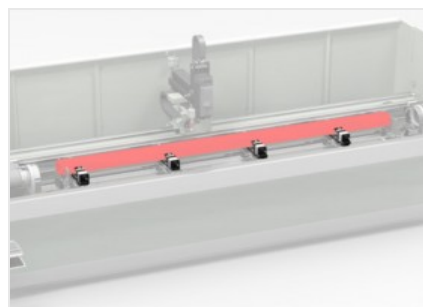
Electrospindle - T -

The high-torque 5.5 kW electrospindle in S1, which is available on request with 7.5 kW power in S1, enables even heavy machining typical of the industrial sector.



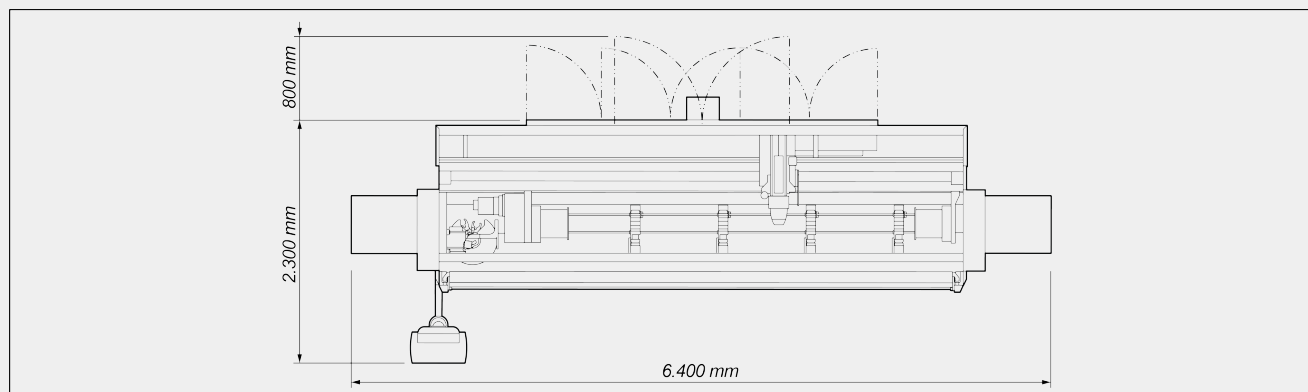
Tool magazine

The new toolholder magazine, which is circular in shape, makes it possible to reduce the footprint, to ensure the positioning of large extrusions on the machine and also to perform tool changes very quickly. The sheet metal protective cover offers optimum protection for the toolholder cones from swarf and accidental knocks. The magazine can contain up to 4 toolholders (8 upon request) with relevant tools, which can be set at the operator's discretion.



Vices

The vice system has automatic positioning via the X-axis. This allows each vice assembly to be positioned very easily, thus clamping the profile. Position indication and verification of correct vices positioning is handled by NC, displaying the information directly on the control screen.


PHANTOMATIC T3 STAR / CNC MACHINING CENTRES
LAYOUT


The overall dimensions may vary depending on the product configuration.

AXIS STROKES

X AXIS (longitudinal) (mm)	4.300
Y AXIS (transversal) (mm)	270
Z AXIS (vertical) (mm)	300
A AXIS (workpiece automatic rotation)	-90° ÷ +90°

ELECTROSPINDLE

Maximum power in S1 (kW)	5,5
Maximum power in S1 (kW) (optional)	7,5
Maximum speed (rpm)	20.000
Toolholder cone	HSK - 63F

AUTOMATIC TOOL MAGAZINE

Maximum number of magazine tools	4 standard ; 8 optional
Number of angle machining heads that can be inserted in the magazine	2
Maximum diameter of the blade that can be inserted in the magazine (mm)	Ø = 180



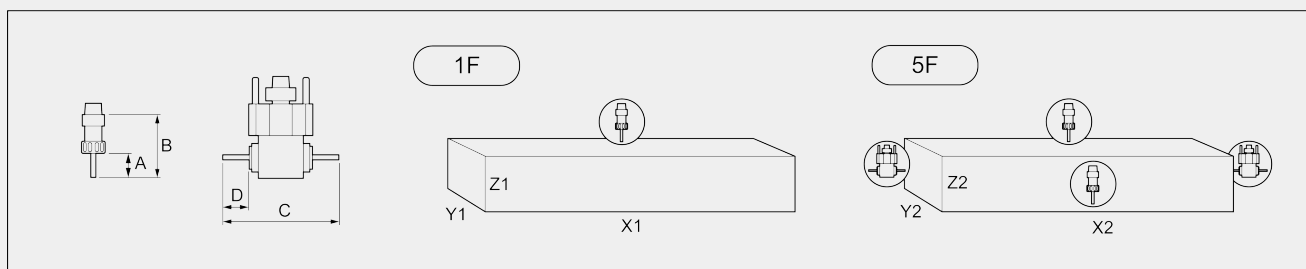
FUNCTIONS

Extended machining, up to twice the maximum nominal length in X (only with two reference stops)	<input type="radio"/>
Multi-piece operation (only with two reference stops)	<input type="radio"/>
Basic multi-step machining - up to 5 steps	<input checked="" type="radio"/>
Workpiece rotation for machining on 4 sides	<input type="radio"/>
Multi-piece mode machining in Y	<input type="radio"/>
Automatic management of multi-step mode machining	<input type="radio"/>

WORKABLE SIDES

With direct tool (upper face and side faces)	3
With angle machining head (side faces and heads)	2 + 2
With blade tool (upper face, side faces and heads)	1 + 2 + 2

WORK AREA

1F = 1 face machining
5F = 5 faces machining


PHANTOMATIC T3 STAR	A	B	C	D	X1	Y1	Z1	X2	Y2	Z2
profile within standard work capacity	60	130	232	50	3.250	210	215	3.150	210	160
through profile (max. width)	60	130	232	50	3.250	200	80	3.150	200	80
through profile (max. height)	60	130	232	50	3.250	140	120	3.150	140	120

Dimensions in mm

**TAPPING CAPACITY (with Tap On Aluminium And Through Hole)**

With compensator	M8
Stiff (optional, only with 7.5 kW electrospindle)	M10

PROFILE POSITIONING

Workpiece reference LEFT stop with pneumatic movement	●
Workpiece reference RIGHT stop with pneumatic movement	○

WORKPIECE LOCKING

Maximum number of pneumatic vices	4
Standard number of pneumatic vices	4
Automatic vice positioning through X axis	●

SAFETY DEVICES AND PROTECTIONS

Machine integral protection booth	●
Side tunnels	○
Cabin enclosure and inner lighting	○
Fume extraction system	○

Included ● Available ○